

COMMERCIAL PLATFORM LIFT FROM INVALIDIFTS





OVERVIEW

Invalifts has recently been acquired by the Aritco Group AB; one of the world's leading manufacturers of platform lifts. For our customers, this means we can offer the backing of a huge group with all our products, it also means improved customer support, and the addition of exciting new products to our range.

One of the most versatile new products added to our range is the 'Commercial Platform Lift.' This platform lift has been designed for schools, restaurants, offices, public and commercial buildings, offering a high quality of finish, including an anodized aluminium platform console, braille and tactile push button, along with an ergonomically designed aluminium or stainless steel handrail on the carriage. The shaft and landings doors can be powder coated to over 1,500 different standard RAL colours. We also have the option to included 3 different sizes of glazed shaft panels to open the structure of the platform lift.

We can take the level of finishes from the high standard finish to an exceptional level of sophistication to suit every application.

Due to continuous product development, all specifications included in this catalogue are subject to change without prior notice. Reservations are made regarding misprints and articles being out of stock.

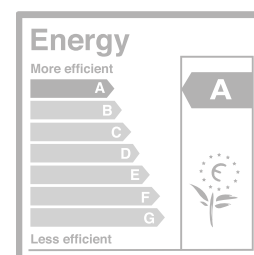
CONTENT

Product summary.....	3
Lift colour	4
Carrier	6
Floor	7
Control panel	8
Doors.....	10
Door control	12
Door machinery	14
Communication	15
Drive system	16

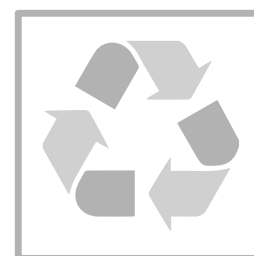
PRODUCT SUMMARY

The Commercial Platform lift is our bestselling platform lift. The lift is designed to meet all requirements for quality, safety and service life. It is a perfect fit for tough and demanding environments such as schools, shops, commercial and residential buildings.

Type of lift :	Platform lift intended for use in public & commercial environment.
Technical compliance:	European Machine directive 2006/42/ EC European standard EN 81-41
Drive system:	Patented screw/nut system
Rated speed (max):	0.15m/s
Travel height:	250 -13,000* mm
Number of stops:	Max. 6 stops per lift
Number of doors:	Max. 6 doors per lift
Number of doors per floor:	Max. 2 doors per floor
Pit:	50mm or optional ramp (no pit required with ramp)
Entry:	One, two or three sides, excluding drive side
Top height:	Minimum 2240mm (1100-1600mm with half height gate)
Platform control:	"Hold to run", the destination button must be kept pressed down during the whole journey
Landing control (on door):	One-touch call
Environment:	Indoor
Emergency lowering:	Battery operated emergency lowering
Control voltage:	24V
Motor:	2.2kW
Power supply:	1-phase 230V 50 Hz/9A / 16A 3-phase 400V 50 Hz/5.2A / 16A
Rated load:	250, 410 or 500kg (depending on platform size)



Energy Performance Certificate (EPC)



Recycling

*Travel height when having a half door is maximum 3000 mm

LIFT COLOUR

Our commercial platform lift can be painted in any RAL colour from standard range.

**Standard:**

Whole lift painted in standard colour RAL 9016 (Traffic white)

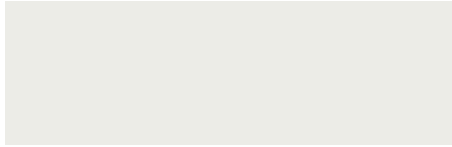
Full colour option:

Whole lift finished in optional colour (Incl. shaft, doors and the panels under the destination panel.)

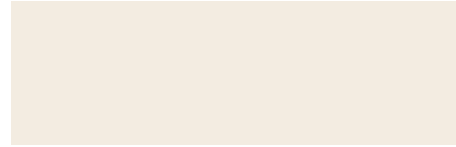
Lift partially painted in different colours:

- Lift walls/Shaft in one colour.
- All door blades in one colour.
- All door frames in one colour.
- Panels under the destination panel in one colour.
- One of the above choices or a combination of them.

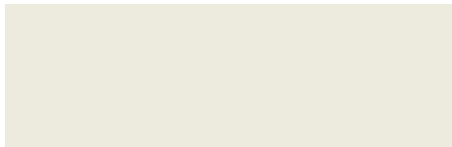
COMMON COLOUR CHART



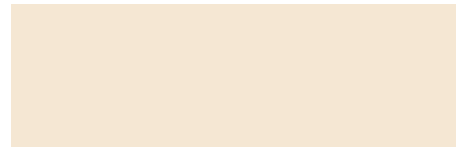
Traffic white - Standard color
RAL 9016



Pure white
RAL 9010



Grey white
RAL 9002



Oyster white
RAL 1013



White aluminum
RAL 9006



Light ivory
RAL 1015



Telegrey 1
RAL 7045



Moss green
RAL 6005



Anthracite grey
RAL 7016



Brown red
RAL 3011



Jet black
RAL 9005

Note that the actual color of the lift may differ from the color samples pictured above.

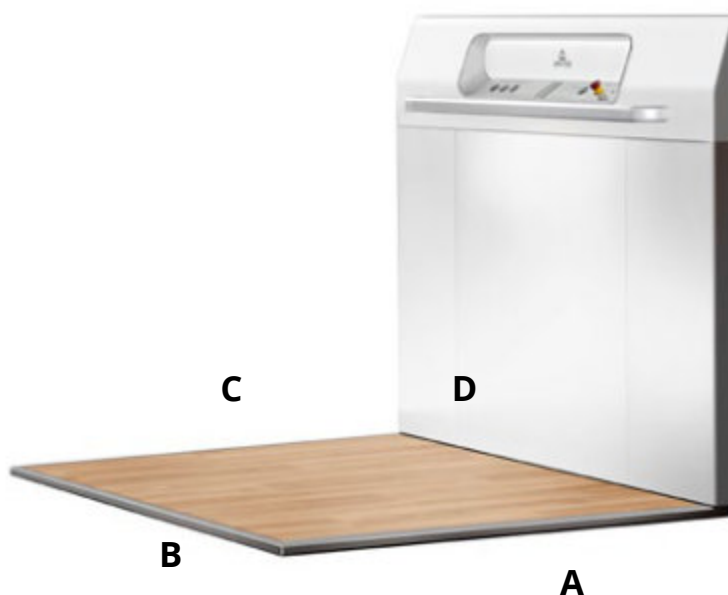
Note that the actual colour of the lift may differ from the colour samples pictured above.

* Any RAL colour means in this case any RAL colour from the 213 colour RAL chart K7 classic except the following colours that are not available;
Luminous colors: RAL 1026, 2005, 2007, 3024, 3026, 6038
Pearl Colors: RAL 1035, 1036, 2013, 3032, 3033, 4011, 4012, 5025, 5026, 6035, 6036, 7048, 8029, 9022, 9023

PLATFORM

The standard platform is delivered with a half-height wall including destination panel.

Panels under the control panel are painted in RAL 9016 (white) as standard, but can be painted in any RAL colour as an option.



A, B, C and D-side of platform.



FULL HEIGHT WALL

As an option the platform can be delivered with a full height wall 2100mm high with a mirror and integrated LED lighting. The full height wall is finished in RAL 9016 as standard, but can be painted in any standard RAL colour as an option. The full height wall is available on platforms of 1480mm long.

The full height wall is not available for door heights of less than 2000mm or a half height gate.

FOLD DOWN SEAT

In solid birch and with chromed brackets. The seat has to be folded back manually after use. Can be ordered as an option.

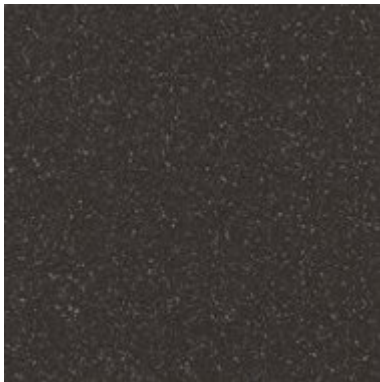
Size: 320 x 400mm



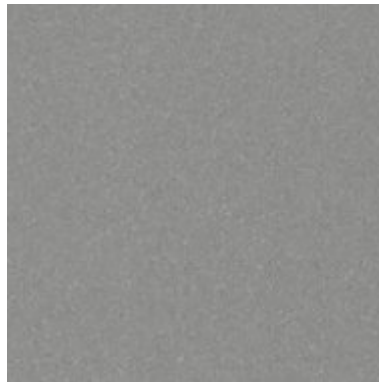
FLOOR

Choose between the following options for vinyl, rubber and aluminum floorings.

It is also possible to order the lift without a floor covering, which enables you to fit your own floor with a maximum of 3mm thickness. Note that aluminum flooring is not available for platform size 900 x 1040mm.



Dark Grey Vinyl
Standard



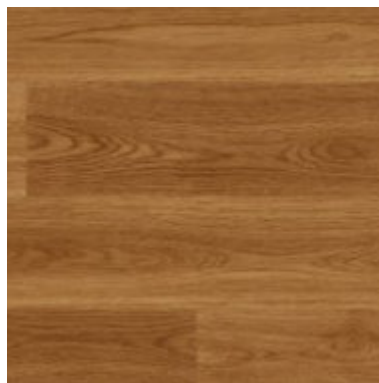
Light Grey Vinyl
Standard



Aged Oak Vinyl
Standard



Oiled Oak Vinyl
Standard



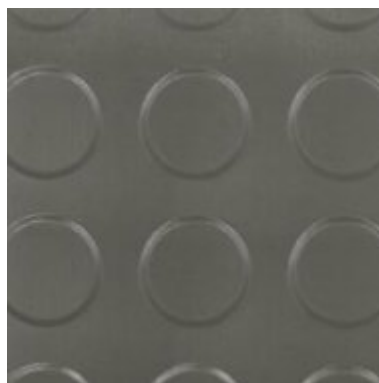
European Oak Vinyl
Standard



Aluminum
Option



Checker Stud Black Rubber
Option



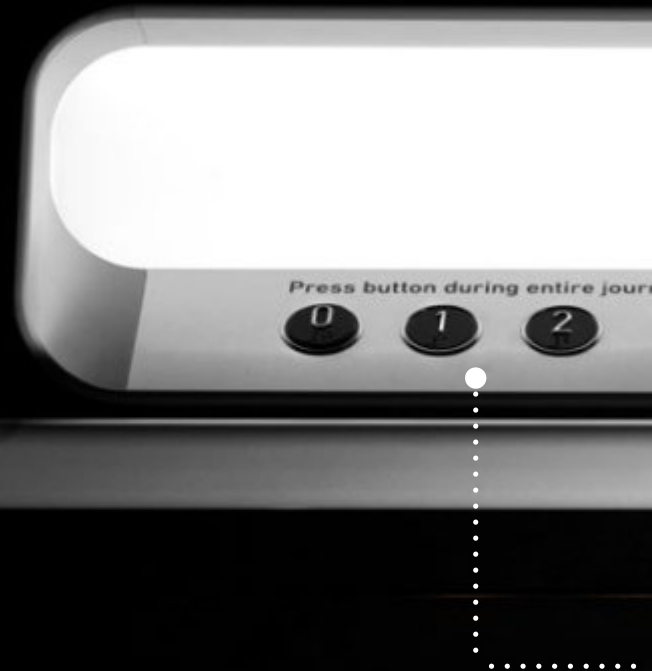
Checker Stud Grey Rubber
Option

CONTROL PANEL

The control panel is delivered with a light box, with an acrylic glass that is lit with LED light.

The destination buttons, emergency stop button, alarm button, maximum weight and number of persons are all located on the control panel. Options such as auto dialler and landing directors can also be located on the control panel if required. Parts around the light box and aluminium panel are painted in grey, which give the impression of aluminium.

The standard designation buttons are 32mm diameter and come with braille as standard. As an additional option the designation button can be increased to an extra-large 50mm diameter to provide enhanced accessibility.



LANDING INDICATOR

A landing indicator can also be fitted to the control panel as an optional extra. The indicator shows which floor the platform lift is on and comes with a voice announcer. Additional information which can be shown on the indicators is.

- Warning of low battery.
- A bell when the alarm button is pressed.
- A weight symbol when the platform is overloaded.
- If connected to the fire drive can show a fire symbol if the fire drive is activated.

Can be ordered as an option.

ALARM BUTTON

A standard alarm button is always delivered with the lift. When it is pressed a buzzer sounds. This is only a signal to the user that the button is pressed. The alarm button may be connected to an external alarm sounder or an autodialler. The alarm button is standard.

EXTERNAL ALARM SOUNDER

An external alarm sounder can be connected to the platform and the alarm button on the control panel, to sound outside of the platform lift to attract attention that the alarm button is being pressed on the platform.

sounder will give a loud signal outside the lift to attract attention in case of emergency. Can be ordered as an option.

EMERGENCY STOP BUTTON

An Emergency stop button "Mushroom" type is always fitted to the control panel. The button has a light indicator to show when the button has been pressed down and needs to be released.

HANDRAIL

A handrail is mandatory according to EN81-41 and delivered as a standard. Height of handrail is 875 mm from the platform floor. The ends of the handrail are closed and turned to the platform. The handrail is made of aluminum with zinc corners and are painted in RA L 9016 (traffic white) as standard. When platform is ordered in another color than standard the handrail will be painted in grey, A nodic color Natura, that looks like aluminum. It is the same color as is used for the details around the control panel. Both the grey and white handrails will have a glossy surface to protect them from wear and tear and from getting dirty. In the handrail there is an integrated LED light, that gives light on the floor (50 LUX).

GREEN RING - IDENTIFICATION FOR EXIT FLOOR

A green ring, indicating the exit floor can selected on one of the destination buttons (max one per lift). The green ring is included as standard.





KEY SWITCH ON PLATFORM

A key switch placed on control panel. The key switch locks the platform functions and prohibits unauthorized use. One key switch per platform can be provided. The key switch can be serial connected to all destination buttons or the key switch is connected to one destination button.



CONTROL PANEL - EXTRA-LARGE BUTTONS

As an additional option the designation button can be increased to an extra-large 50mm diameter to provide enhanced accessibility.

Destination buttons are according to EN81-70 Annex B for disabled. The location of the buttons is within the limits in the standard, i.e. height between platform floor and the center line of the buttons is between 900 -1100 mm.

The touch plate is in stainless steel in black. Text/number embossed. Height of text/number 30.3mm. With Braille.

The location of the destination button are between 900mm and 1100mm and at a suitable height for a wheelchair users. With braille and 6 potential destination buttons these made up the control panel along with the standard alarm button, emergency stop button, overload indicator and capacity label.



FACEPLATE PANEL

The faceplate panel is painted in grey which has an Aluminum look. To prevent trapping, a safety bar is mounted behind the faceplate panel which isolates the safety circuit when pressed down.

LIGHT

LED lights are installed above the destination panel.

EMERGENCY STOP BUTTON

Button in "mushroom" type for emergency situations. Is always included as standard.

ALARM BUTTON

A standard alarm button is always delivered with the lift. When it is pressed a buzzer sounds. This is only a signal to the user that the button is pressed. The alarm button may be connected to an external alarm sounder or an autodialer.



LANDING INDICATOR

Digital display positioned on the destination panel. It shows which floor the lift is on at the moment. The indicator can also be fitted with a voice annunciation (Option) Basement, Ground Floor, Floor 1 – 6. The landing indicator can also show information from the system (Option).

- Warning if the batteries are low.
- A "bell" symbol when the alarm button has been pressed.
- Number of starts and total run time since installation or since last reset.
- A "weight" symbol will appear if the lift is overloaded.
- If connected to the buildings fire alarm a "Fire" symbol will be shown when alarm is activated.

Can be ordered as an option.

EXTERNAL ALARM SOUNDER

External alarm sounder mounted outside the lift. It is connected to the alarm button and when the alarm button is pressed the external alarm sounder will give a loud signal outside the lift to attract attention in case of emergency. Can be ordered as an option.

HANDRAIL

A handrail is mandatory according to EN81-41 and delivered as a standard. Height of handrail is 875 mm from the platform floor. Handrail diameter is 36 mm. The ends of the handrail are closed and returned towards the platform.

- Anodized aluminum (standard)
- Stainless steel (option)





DOORS

The landing doors installed at each landing are made of galvanized steel and laminated and toughened glass, 8mm thick.

All doors are painted in RAL 9016 (Traffic white) but can be painted in any RAL color as an option. The door frame and door blade can be painted in same color or the frame in one color and the blade in another color.

Standard is with clear glass (J T0). Optional is to have tinted glass (J T16).

The profiles around the door glass are as standard aluminum. For large glass doors and half height doors they can be painted in the same color as the door blade.

All doors can be left- or right hinged. Doors are always delivered with door frame. It is not possible to order the door or the frame separately.



Large glass door



Half height door



EI60 - Fire & smoke proof door

DOOR CONTROL

The door control is either placed on the door frame of each landing door and/or remote from the lift for external control.

DOOR CONTROL ON DOOR FRAME

Door control placed on the door frame of the lift. For our platform lift there is always a place on the door frame for the faceplate.

CALL BUTTON

The call button comes with a background lit frame which indicates the status of the lift.

- Green light indicates that the lift is at your floor. Lit only on the floor where the platform is at the moment.
- Red light indicates that the lift is occupied.
- The flashing light indicates that the safety circuit is broken, e.g. that the emergency button is pressed, the door is open on another floor for more than one minute, the door is blocked or the safety bar is pressed down. The flashing light can also be activated by a smoke alarm, more information is then available in the service memory.

The same call button is used when the door control is placed on the door frame, remotely or as a radio controlled call button.



DOOR MACHINERY

The landing doors are always delivered with either a door opener or a door closer.

Depending on the door type you can either have it mounted internally (in the door frame so that you can't see it from the outside) or externally (in a box visible from the outside).

Door closer: Door is opened manually. The door is closed automatically.

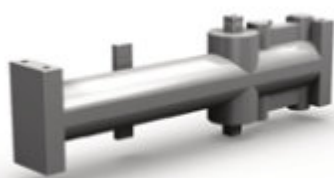
Door opener: Opens and closes the door automatically. Door open time and the opening speed are adjustable.

All openers and closers are available for both left and right hinged doors. When having two doors on the same landing, both doors will be opened at the same time when having door openers.

Door type	Internal door closer	External door closer	External door opener	External door opener FAAC
Large glass door Standard	•	•	•	•
Half height glass door	•		•	
EI60 – fire & smoke proof door	•		•	•
Outdoor lifts	•	•	•	•

INTERNAL DOOR CLOSER

Closes the door automatically. It is built into the door frame and is invisible from the outside. Includes function to keep door open until the user manually closes the door. Standard for all doors.



EXTERNAL DOOR CLOSER

Closes the door automatically. Can be ordered as an option.



HOLD OPEN ARM

Keeps the door open until the user manually closes the door. Can be combined with external door closer only. Can be ordered as an option.



EXTERNAL DOOR OPENER

Opens and closes the door automatically after a preset time. Can be ordered as option. Cover and sides painted in RA L 9016 (Traffic white) as standard. If the door blade is painted in another color, the cover will be painted in the same color. The sides will still be in RA L 9016 (Traffic white).



EXTERNAL DOOR OPENER FAAC

Opens and closes the door automatically after a preset time. Suitable for tougher public & commercial environments. For both indoor and outdoor installations. The opener is installed on the door frame which makes it suitable for installations where space is limited and when lift door opens up close to a wall. Smart logic makes it possible to program the speed and force, depending on door type. If an obstacle is detected, the door re-opens immediately. Then it closes, checking, at reduced speed, that the obstacle is no longer present. Cover in aluminum and sides in grey plastic. Can be ordered as option.



DOOR OPTIONS

DOOR HANDLE

Door handles casted in zinc standard painted in grey, anodic Natura, that looks like aluminum. For lifts ordered with door blades in standard color RAL 9016 (Traffic white) it is possible to order the door handles in the same color as an option. Both the grey and white door handles will have a glossy surface to protect them from wear and tear and from getting dirty.



Anodic Natura
(aluminum look)



Traffic white
(RAL 9016)

LANDING INDICATOR ON DOOR

Digital display positioned at the door frame. It shows which floor the lift is on at the moment. The landing indicator can also show following system information:

- Warning if the lift batteries are low.
- A bell when the alarm button has been pressed.
- Number of starts and total run time since installation or since last reset.
- A weight symbol will appear if the lift is overloaded.
- If connected to the buildings fire alarm a "Fire" symbol will be shown when alarm is activated.

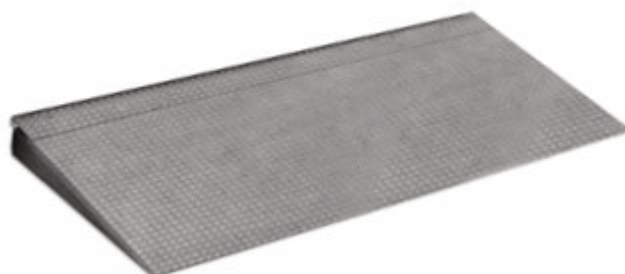


COVER PLATE

If the door control is placed externally and not on the door frame a cover plate that covers the hole in the door frame is delivered with the lift. The cover plate is always delivered with the lift in the same color as the door frame. Standard color is RAL 9016 (Traffic white).

RAMP

If the lift is installed without a pit a ramp is mandatory according to EN81.41. The ramp is made of galvanized steel covered with corrugated aluminum to prevent slipping. The vertical rise of the ramp is less than 1:4. The ramp can be ordered as an option for lifts installed without a pit. Ramp dimensions: Height 50 mm, width 420 mm, length 1160mm.

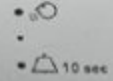


COMMUNICATION

Two way communication is mandatory according to EN81-41. Choose from one of the following options or install your own phone.



Press button during entire journey



Alarm



PHONE

The telephone works as a standard telephone but is intended for emergency calls. The phone is mounted on the platform panel. Equipped with redial memory, mute button and a lamp indicator for on/off. Can be equipped with a GSM module. We do not supply SIM card.



AUTODIALER

Equipment for emergency calls. Integrated on the control panel. Dials automatically when the alarm button is pressed. When unanswered after a pre-defined time, the call is automatically forwarded to the next number.

The autodialer can be equipped with a GSM module (only 2G). We do not supply SIM card.

DRIVE SYSTEM

BATTERY DISCHARGE PROTECTION

The battery guard protects the batteries from damage and ensures that there is enough power so that you can run the lift in case the power to the lift is cut. It ensures that the lift is turned off when the power of the batteries reaches 22V. This means that even if the power on site is turned off the batteries in the lift will not fully discharge and you can still run the lift. The battery guard can be ordered as an option.

SOFT START

It provides a smoother start when pressing a destination button. It is not available for 1-phase lifts, as they come with a frequency control as standard which includes both soft start and stop. For 500kg lifts soft start is included as standard.

BATTERY OPERATED EMERGENCY LOWERING

All lifts have battery operated emergency lowering as standard. You can lower the platform from inside the lift to an exit floor when there is a power failure. Operated by pressing a platform button or can be run externally from the landing call button (hold to run) or service box.

LUBRICATION

The screw must be oiled at regular intervals.

Manual Lubrication: A brush fixed to the platform oils the screw when using the lift (tray with lubrication oil to the bottom of the shaft).

Automatic Lubrication: Oils the driving screw at regular time intervals, even if the lift is not in use (option). The lubrication frequency is adjustable. Standard for lifts with a travel height above 8000mm. Recommended for lifts that are seldom used or not used regularly to travel from ground to top floor.

POWER SUPPLY

For the lift you have the following options:

1-phase 230V 9 A / 16 A

- Frequency converter, with built in soft start and stop

3-phase 400V 5.2A / 16A

- 3 Phase 415v / 16A for 500Kg version
- Frequency converter, with built-in soft start and stop (option).

PHASE SEQUENCE RELAY

Extra protection ensures that the lift does not run in the wrong direction when the phases are connected incorrectly. Option only for 3-phase lifts.



Read more at www.invalifts.com

Follow Us!



6 Falcon Park, Claymore, Tame Valley Ind.Est.
Tamworth, Staffs B77 5DQ
Tel: 0845 468 2543
Email: sales@invalifts.com